



Hastings Library – E.S.C.C.  
Case Study

“What we have created is a modern and vibrant library which will serve generations to come”

Councillor Bill Bentley, East Sussex County Council

Hastings Library, The Brassey Institute, is a Grade II listed building located in a conservation area in Hastings town centre. The building has undergone a multi-million pound refurbishment and modernisation programme which reconfigured the internal layout of all floors whilst retaining and protecting the original heritage features.

TT Solutions & Interiors' challenge was to provide an innovative and exciting library design which was sympathetic to the well known 19th century building yet delivered a state of the art library with a wow factor which encourages increased use from the local community.

The design spans all 5 floors incorporating lending library, children's library, reference , study and relaxation space and a flexible office area for partnership opportunities. An event space for 100 people is easily achieved by moving the shelving on the ground floor.

The flexible design promotes the delivery of the wide range of library functions and activities. The shelving colour and furniture on each floor was chosen to reflect the services provided. All the shelving and attractive display equipment can be configured for large and small books and the gondolas are easily movable so that space can be created for partnership working, events and activities. Special ICT carrels, located throughout the library, offer customers comfort, ability to recharge devices and privacy.

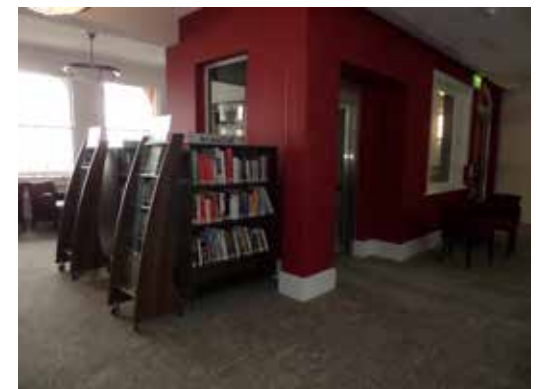
The Children's library is particularly vibrant with an attractive and brightly coloured seaside theme which links with the especially commissioned wall hanging by Quentin Blake. Exciting reading hideaways, soft comfortable seating and two rowing boats offer excitement and interest. Uniquely designed beach huts containing public computers for younger people complete the seaside scene.

A new learning suite with 20 computers provides access to online courses.

The overall design offers something for everyone; quiet study spaces, meeting areas, comfortable seating for parents and children along with a great library loved by the Hastings community.























Units 11-14 Central Trading Estate, Signal Way, Swindon, Wiltshire SN3 1PD  
Contact Tel: 01793 422 944 enquiry@ttsi.co.uk www.ttsi.co.uk

---