



CLIENT: E.S.C.C.

PROJECT: HASTINGS LIBRARY FIRST FLOOR

DESCRIPTION: DESIGN AND MANUFACTURE



Case Study 2



Case Study Detail:-

In 2016 TT were proud to be selected to work with the Library team at Hastings with the aim to deliver five floors of equipment and furniture with all floors having different customer and operational requirements. Each floor therefore was treated as a separate project by both teams. We have selected the First Floor – 231 metres public space for our Case Study example as many of the elements from the brief are comparable to the requirements for Crowborough Library.

Client Brief

The customer requirements for this floor was to contain: - Children's library and Adult lending library, a very brief example of some of the points from a very concise and specific specification of requirements were as follows:

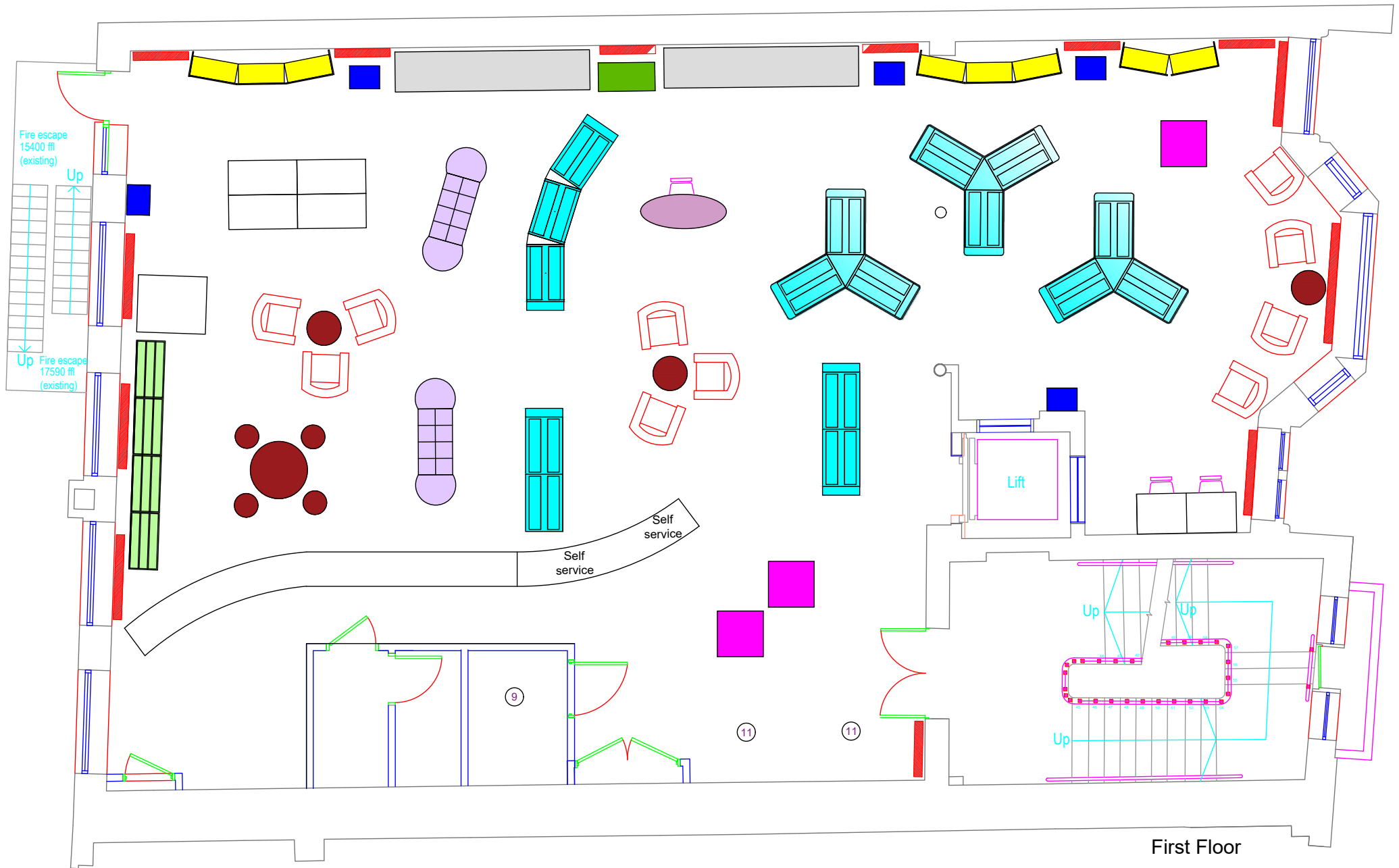
- Children's Library to be a large and welcoming space dedicated to children. It should be fun and vibrant and encourage children to develop a lifelong reading habit. To include a seating wall or other special children's feature.
- The shelving should be able to display and promote stock, allowing customers to navigate the non-fiction through the use of front on display of stock. The stock will enable customers to move between zones that reflect their choices. Curves and wavy shelving should be incorporated in to the design (as opposed to rows of straight bays).
- Study areas to be included in the design for both children and Adult areas.
- Adult section to include Adult Fiction and Non Fiction

Although our initial design for the Children's area was thought to be interesting to the team it was felt that we needed to undertake further work to bring memorable impact to the space.

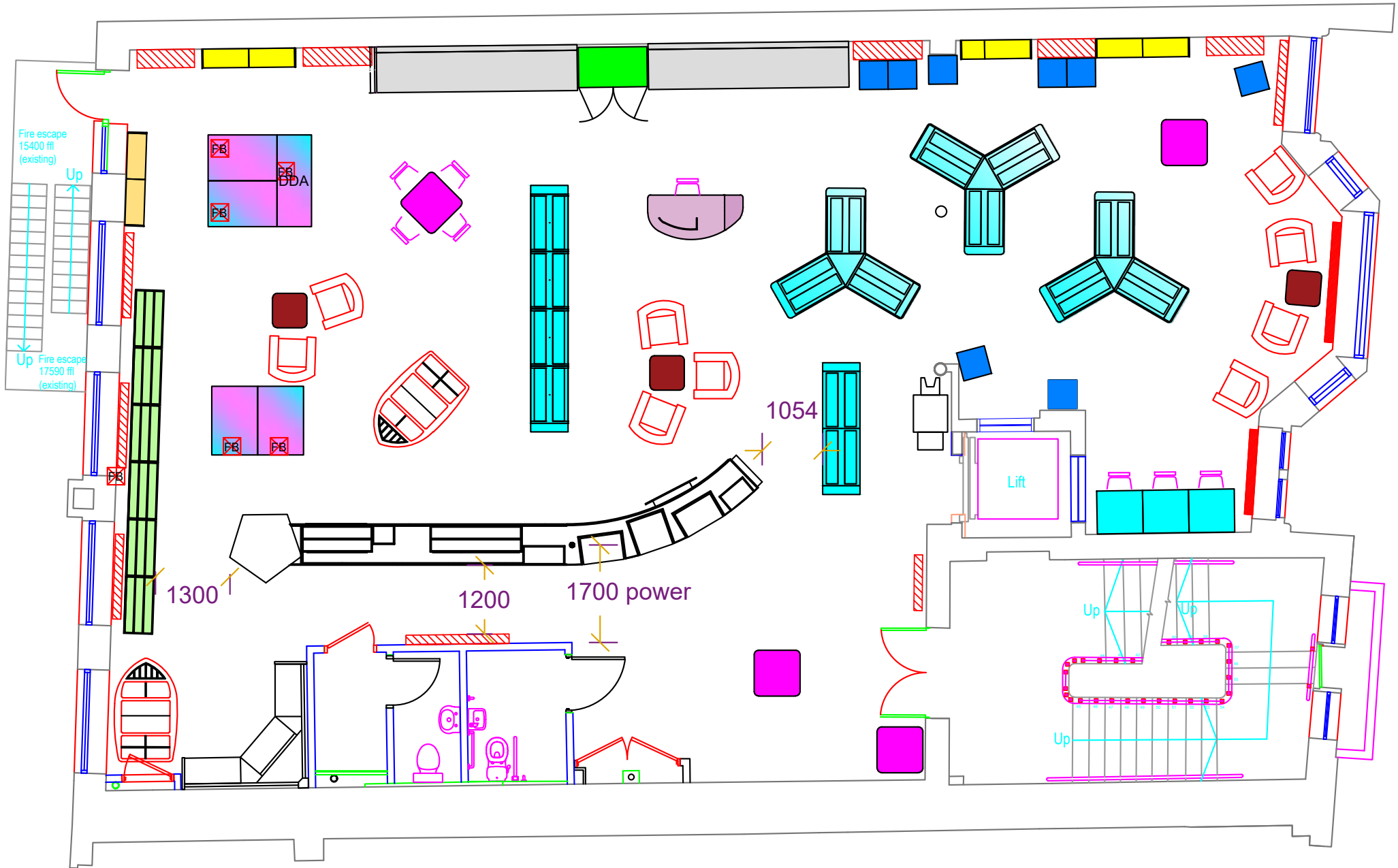
To ensure that the book capacity and the offer was maintained for the Adult book stock, we incorporated a mix of fixed bookcases and some of our proven mid-floor units that are able to be repositioned if required to give flexibility and for the study areas we developed both an adult and children's option.

The following two plans of the area gives indication to how after consultation and development with the library team the space was changed.

This stage of communication is paramount to achieving the best use of space and delivering the needs of the client and end user.



First Floor





Case Study Detail:- Cont'd

From our scheduled meetings with the team at Hastings, we set about designing some bespoke furniture that would prove to have both a major impact from a focal perspective as well as fulfilling the important operational needs.

The following visuals give indication to the strength of working closely together with the client at the meetings as we are able to interpret our conversations by sending back proposed visuals of the equipment for approval.

Notwithstanding that there were site delays due to unforeseen circumstances, the main of the design and development was expedited in a very quick and efficient manner. This allowed us to update costs ongoing and get sign off by the client for each item, this then allowed TT to create a Bill Of Materials and start the engineering process that creates the detail required for manufacture.

Samples and prototypes were produced for some of the items prior to sign off.

From this point, the project was tracked internally in line with the clients needs and then enters into an internal customer service system that gives the manufacturing and installation teams site of when the project is required to be delivered.

The Hastings project on a few occasions moved due to site issues but these changes were fed back from the project team and the appropriate changes were made to the manufacturing plan.

The same process was followed for each of the five floors and was essential in us achieving the end result.

The key elements that we give focus to for every project are always the same, this helps create a company culture that delivers a consistent end result for all of our clients - Communication, Coordination and Control with regular feedback between both teams.

The last slide shows the finished photos, these are always important as it can be seen that they reflect very closely to the visuals shared with the client some time before the install and hopefully therefore does not disappoint.

We at TT are very proud of this project and has been a reflection of how well things can work when your client is in tune with the process and the communication flow is maintained with regular feedback. A great job by both teams.









Units 11-14 Central Trading Estate, Signal Way, Swindon, Wiltshire SN3 1PD
Contact Tel: 01793 422 944 enquiry@ttsi.co.uk www.ttsi.co.uk
